

Heckington St Andrew's Church of England Primary School Newsletter



13th February 2020

Dear Parents and Carers,

Thank you to everyone who have attended our stay and learn sessions or our class collective worships; I'm sure you'll agree that there has been some fantastic learning across school this term!

Coming home tonight are the children's learning profiles. As part of the profile, there is a printed sheet which gives future targets for your child and a place for you to write a comment on how you think your child is progressing. **Please return your child's profile, with your written comments, to school by Friday 28th February.**

Finally, I hope you all have a lovely half term break and we'll see the children back in school on Monday 24th February.

Mrs J Bentley
Headteacher

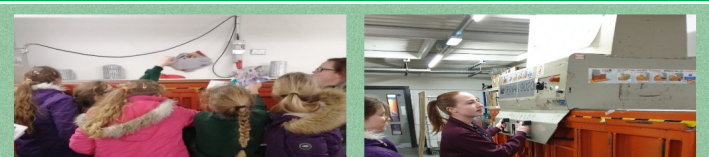
Attendance data for Spring Term 1

Please see below for our attendance data to the end of Spring Term 1. Remember, we are aiming for 96% attendance or better to ensure that our children have the best chance to succeed at their learning.

Spring Term 1 Attendance Averages	Attendance Key
Oak Class = 92.17%	<p>96 - 100% Well done 91 - 95% Risk of underachievement 85 - 90% Serious risk of underachievement Below 85% serious cause for concern and underachievement.</p>
Maple Class = 95.12%	
Willow Class = 96.26%	
Chestnut Class = 96.19%	
Rowan Class = 96.50%	
Silver Birch Class = 95.21%	
Hazel Class = 96.74%	
Overall = 95.59%	

Let's continue to improve as we're aiming for 100% attendance!

Good to be Green club visit Sainsbury's recycling Christmas cards



*My Eco School:
Recycling our Christmas Cards
at Sainsbury's*



Shoe boxes

Chestnut class would appreciate any shoe boxes or similar boxes to use in class. If you have any spare, please bring them in after half term. Thank you!

Dates for your Diary

13.02.20 - End of Term 3
24.02.20 - Start of Term 4

Bags for School

Please start saving old clothes ready for Bags for School. Bags are coming home this week, to be returned to school on by 9:00am. on 4th March.

